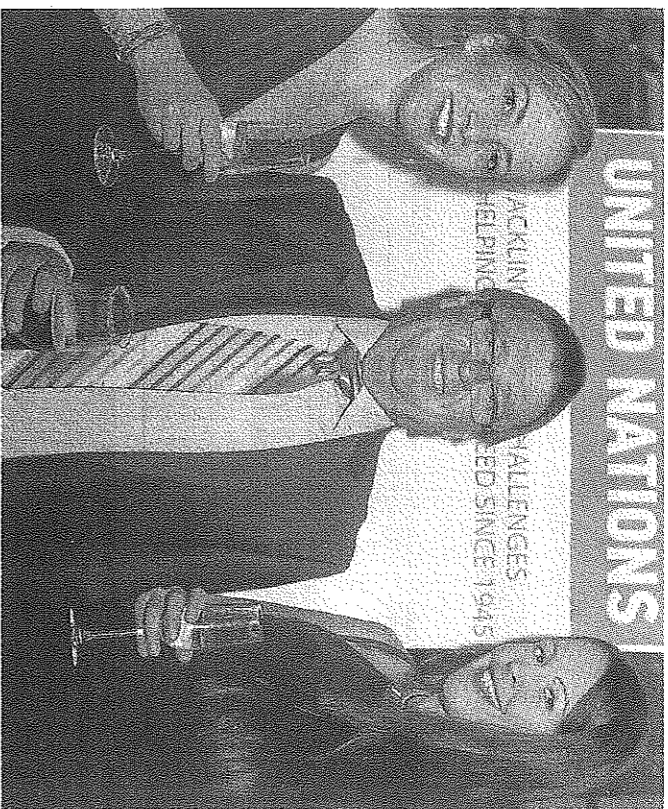


# Environmental education exemplified



THE River Murray's young environmental champions have received an official commendation from the United Nations (UN) Association of Australia.

The River Murray Youth Council and a young environmental leaders program run by the Natural Resources South Australian Murray-Darling Basin education team, jointly based in Murray Bridge, were recognised at an awards ceremony on June 5.

The UN Association said the two programs were a ground-breaking example of how young people in rural areas could gain the knowledge, skills and voice needed to make a difference to the environment.

In turn, education team leader Pippa Cattanaach thanked the schools, students, teachers and parents from across the Murraylands, Riverland and Mallee who supported and participated in the programs.

"We acknowledge their wonderful support and hope that they feel a part of this special recognition," she said.

The awards were handed out to mark World Environment Day.

- Details: For more information about the programs and how to get involved call Pippa Cattanaach on 8391 7500 or email pippa.cattanaach@sa.gov.au.

**Recognised:** Pippa Cattanaach, Harry Beauchamp and Jodie Somerville accept a United Nations Association of Australia commendation on behalf of Natural Resources South Australian Murray-Darling Basin's education program.

**YOU BUILD MACHINES**

**WE MAKE PARTS**

**Kennewell**  
CNC MACHINING  
SINCE 1995

Lets Talk 8532 4977

VR2139305

**BRINKLEY WASTE & RECYCLING TRANSFER STATION OPENING HOURS**

AS OF THE 21ST JUNE, 2015 THE BRINKLEY TRANSFER STATION IS OPEN ON SUNDAYS FROM 10AM TO 4PM FOR A SIX MONTH TRIAL PERIOD

**REVISED OPENING HOURS**  
MONDAY - SATURDAY  
8.00AM - 4.00PM  
SUNDAY  
10.00AM - 4.00PM

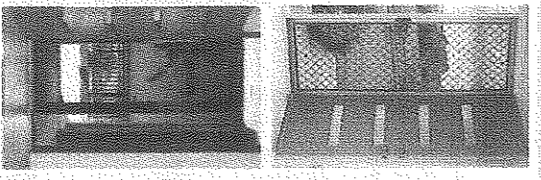
**AHRWMA**  
Sustainable Waste Management  
Through Special Services

**MURRAY BRIDGE**  
The Murray Regional Council

VR2171755

**ENSURE YOUR HOME IS SAFE AND SECURE.**

- Our security doors are the ideal visual deterrent
- They provide effective protection
- A variety of mesh options available
- 3-point locking systems available
- Superscreen Doors are made of high tensile marine grade stainless steel and come with a 10 year warranty



**ROWE**  
ALUMINIUM AND SECURITY

44 Princes Highway, Murray Bridge  
Email: sales@rowealuminium.com.au  
Phone: (08) 8532 1230

VR1982188

# Plans for rowing club

From page 1

## \$6m for ferries

Its rent will gradually increase as it settles over the next five years.

Mr Christian said the club had spent as long as 15 years looking for a new site before finally settling on one only a few metres away, but that the wait would be worth it.

"They're looking at making Murray Bridge the second-biggest rowing complex in SA," he said.

"We'll have about eight regattas here a year, which is a great thing because it brings money into the town."

The idea was originally part of a joint proposal between the rowing club and Murray Bridge Community Club.

A similar lease won approval from the council and from all 14 people who submitted comments during consultation in 2012, which lapsed because construction did not start within two years.

Community Club president Martyn Codrington said that building's redevelopment remained on hold, but two years remained on the club's current lease.

- Details: To view the rowing club's plans and have your say visit [www.murraybridge.sa.gov.au/publicconsultation](http://www.murraybridge.sa.gov.au/publicconsultation) or drop into the council's office on Seventh Street, Murray Bridge.

TRUCKS weighing more than 12 tonnes will no longer be able to use the Taillem Bend ferry from today, but relief is finally in sight.

The State Government has announced it will fund the replacement of the last two wooden-hulled ferries on the River Murray by 2019, at a cost of \$6 million.

Four such vessels remain in service, including at Taillem Bend and Mannum, but two steel-hulled replacements are already under construction at Bowhill Engineering.

The additional funding will give South Australia a fleet of 12 modern ferries, but no replacement will be available if one breaks down.

Member for Chaffey, Tim Whatstone welcomed the funding announcement, and hoped the lack of a back-up vessel would not matter.

"To have a spare ferry in the equation I think is important, though with an upgraded fleet of ferries I'd hope we'll have less need for a replacement," he said.

"I'd be more interested in upgrading one of the (wooden-hulled) ferries currently in use - if it can be used in an emergency situation, so be it."

Meanwhile, Department of Planning, Transport and Infrastructure chief operating officer Paul Geston said the new weight restriction on the Taillem Bend ferry would extend its safe operating life.

Heavy vehicles with a weight greater than 12 tonnes will need to travel upstream to the Swampport Bridge, near Murray Bridge, or downstream to Wellington, though five trucks weighing up to 16 tonnes will be able to use the ferry in case of emergency.

State Transport Minister Stephen Mullighan acknowledged the inconvenience the restriction would cause, particularly to farmers and trucking companies, but said the ferry was reaching the end of its lifespan.

Restrictions on maximum vehicle weight are now in place on all of South Australia's wooden-hulled ferries: 16 tonnes at Cadell, 12 at Taillem Bend, 10 on Mannum's downstream ferry and six tonnes at Lyrrup.

Each originally had a total maximum capacity of 50 tonnes.

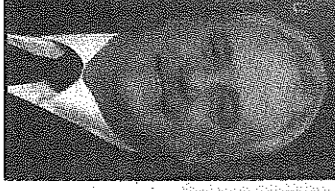
**Adrian Pederick MP**  
Member for Hammond

Supporting the Dairy Industry

Hammond Electorate Office  
20 Mannum Road, Murray Bridge  
T: (08) 8531 1275  
E: [hammond@parliament.sa.gov.au](mailto:hammond@parliament.sa.gov.au)  
W: [www.adrianpederick.com](http://www.adrianpederick.com)



Authorised by A Paterick  
20 Mannum Rd, Murray Bridge 5253



managed **MIS** insurance solutions  
WORKING WITH YOU

AMBERED BERTSBERGINS W-46245723



FROM JUMPING CASTLES TO PET INSURANCE - CALL US NOW  
253 Adelaide Road, Murray Bridge | Aidinga Beach  
8532 3093 | 8557 6404

[www.misolutions.com.au](http://www.misolutions.com.au) | [murrayvalleystandard@gmail.com](mailto:murrayvalleystandard@gmail.com)